



Yun Yang Fire Safety Equipment Co.,Ltd.

YFR-S3

Addressable Annunciator

Operation Manual

2021-03-30 REV-0

7114-R03-S3-E

Yun Yang Fire Safety Equipment

TEL : +886 7355 1234

FAX : +886 7355 0022

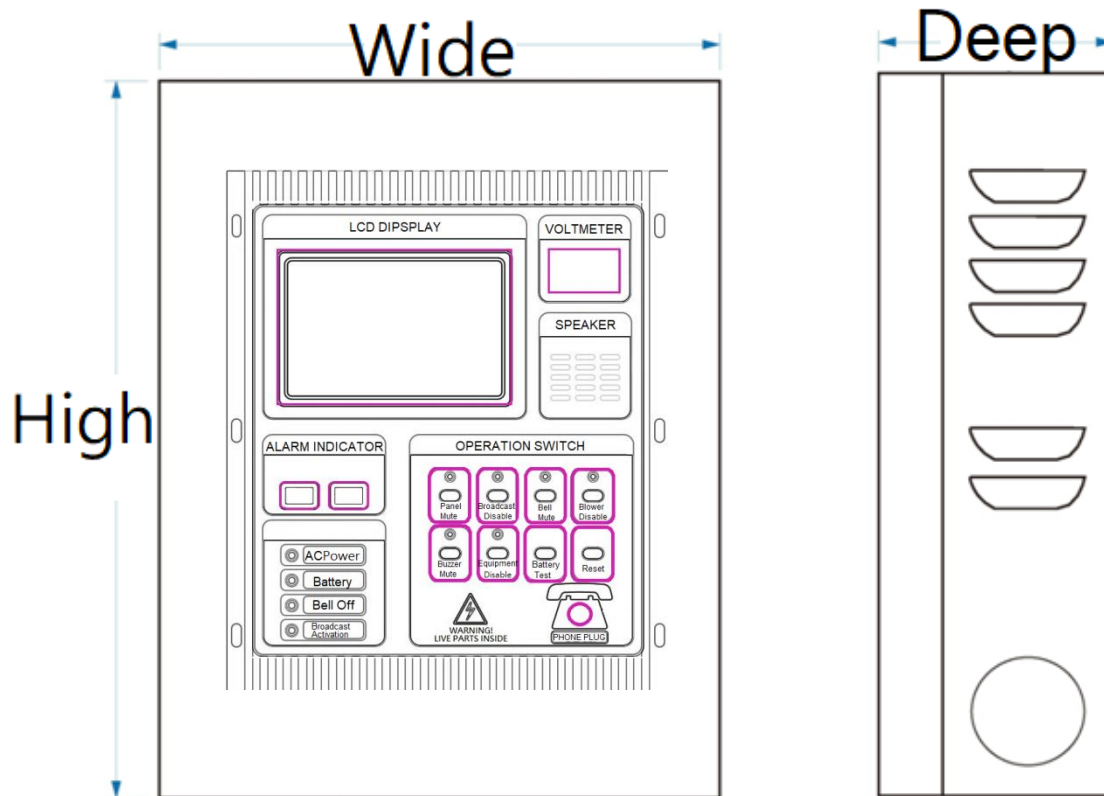
http : //www.yun-yang.com.tw

Email : ty.y.intl@yun-yang.com.tw

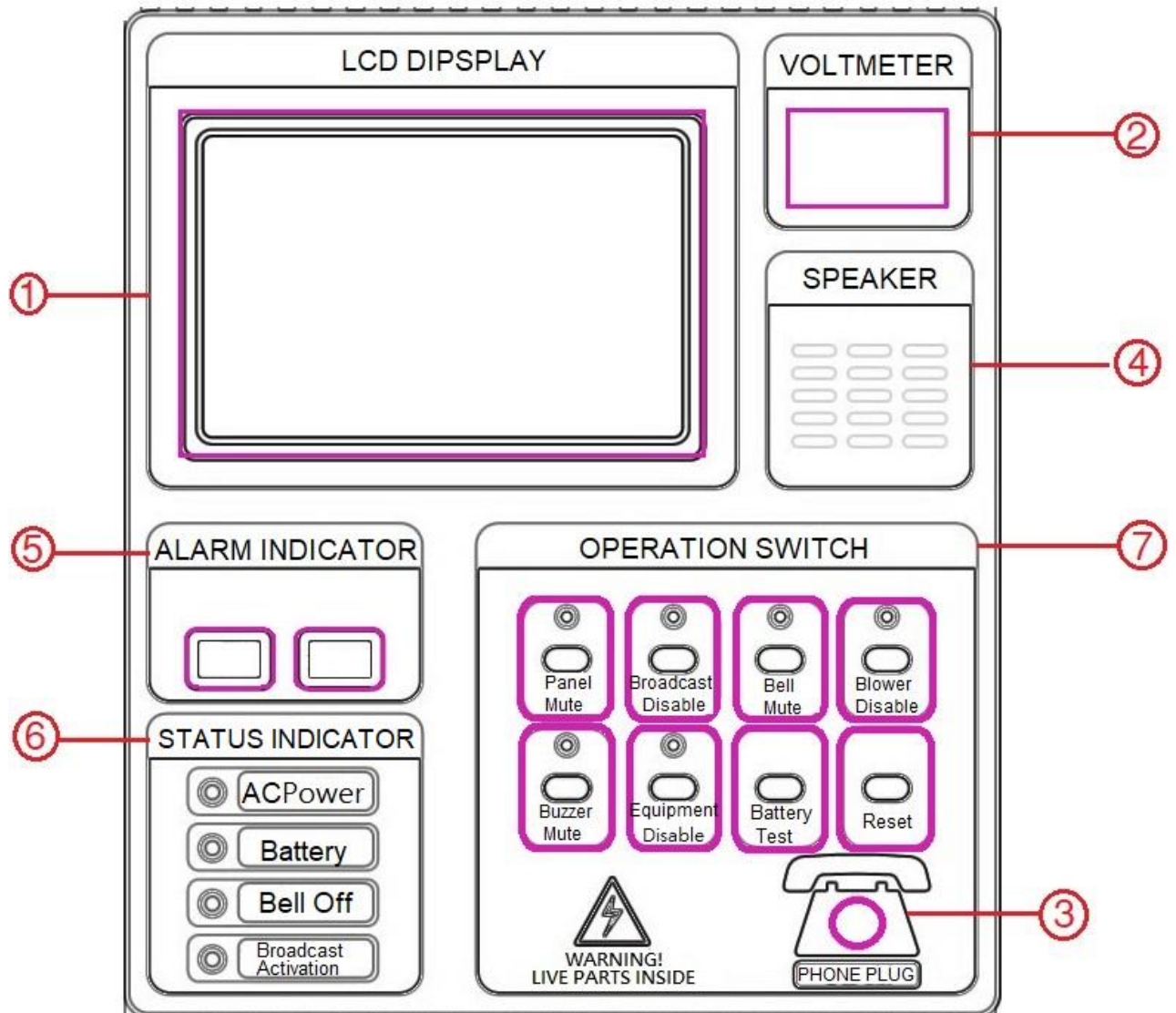
Table of Contents

External Dimensions Drawing.....	2
Control Panel Description	3
A. Name of Main Panel Sections.....	3
B. Description of Alarm Indicator.....	4
C. Description of Indicator Lights in the Status Section.....	4
D. Description of Switches in the Function Section.....	4
E. Specifications.....	5
F. Simply Troubleshooting.....	5
G. Note of Maintenance.....	6
H. Note of Installation.....	7
I. Wiring Diagram.....	7

External Dimensions Drawing



A. Name of Main Panel Sections



1. LCD Touch Display : LCD Display in English.

5. Alarm Indicator: Fire Alarm / Gas Alarm.

2. VOLT Meter : Indicating Main Power Voltage.

6. Indicator: System Status.

3. Phone Plug

7. Function : Function operation button.

4. Speaker: Annunciator Audio.

B. Alarm Indicator

1. Fire Alarm :
This light flashes when there is a fire.
2. GAS Alarm :
This light flashes when the Gas is leaking

C. Indicator

1. AC Power :
The indicator light flashes when the main system is using AC power.
2. Battery :
The indicator light flashes when the panel powered by stand-by power.
3. Bell Off :
The indicator light flashes when the panel is in the status of the area bell is permanently off.
4. Broadcast Activation :
The indicator light flashes when the panel is in the status of broadcast activation.

D. Description of Switch in the Function Section

1. **Panel Mute** : Flashes when pressed to turn off the main audio.
2. **Broadcast Disable** : Flashes when pressed to turn off the broadcast relay function.
3. **Bell Mute**(Beep again later) : Flashes when pressed to stop the alarm bell temporarily.
4. **Blower Disable** : Press to turn off the blower.
5. **Buzzer Mute** : Press to turn off the buzzer.

6. **Equipment Disable** : Press to call out relay switches in the “Touch Operation Display” and access the relay cancellation window.
7. **Reset** : Press to sets all main panel and annunciator status to reset mode.

E. Specifications

Item	Specification
Main Power Supply	AC110V 50/60Hz · AC220V 50/60Hz
Standby Battery	DC24V
Main/Sub-panel Communication	RS-485
Loop Voltage	Load power / Zone telephone: DC24V
Main Audio	Synthesized sound, vocal, or alarm sound (over 90 dB)
Temperature Range	0~40°C
Cabinet Material	Power coating steel

F. Simply Troubleshooting

1. No power lamp indicator:
Check the AC power supply and standby power supply is normal. Main power board AC power switch and standby power switch are turned (ON). Check AC power fuse of main power board is not breakdown.
2. LCD reveals circuit disconnection/fire alarm:
Please check external address device (repeater) in advance then check line and detector of back terminal.
3. Switch not in position lamp flashes:
Press the ON/OFF switch again to return output function.

G. Note of Maintenance

1. When the annunciator is in standby monitoring mode:
AC power indicator lights on, back light power-saving function of the LCD turns on without any indicator.
2. At least twice a year to do the maintenances is suggested to ensure the proper functioning of the devices.
3. Please promptly service and repair devices when malfunctioning is noted or when the outer equipment becomes damaged to avoid compromising normal operations or resulting in subsequent damages.
4. Please contact professional organization (s) or relevant qualified maintenance personnel to test the devices. Test should be recorded and reported to relevant authorities for reference go guarantee the safety of the public. The below test items are for reference:
 - (1) Power: AC power and stand-by power performance are normal. Stand-by battery storage is normal as well.
 - (2) Fire Alarm / disconnection test: Under normal operation, the panel automatically detects the main panel. When abnormality is detected, please promptly inspect and repair the device (s).
 - (3) Check the lamp and display of operation panel are normal.
 - (4) Check the switch and indicators lamp on the operation panel are normal.
 - (5) Check previous alarm data records to track any error happened.
5. Maintain the surrounding environment of devices and avoid locations with high humidity, high temperature, or unstable power or voltage (excessive voltage) to guarantee the working life of the electronic parts.
6. Keep LCD window clean.

H. Note of Installation

1. Please make sure the AC current voltage before turn on the power.
2. Please turn off battery switch when disassemble battery. Confirm polarity of stand-by battery and correctly install on the terminal base.
3. The unit is required to connect ground certainly.
4. During the testing, turn off AC power switch then also turn off stand-by power switch to avoid battery overcharging.

I. Wiring Diagram

YFR3-S3 Addressable Annunciator

